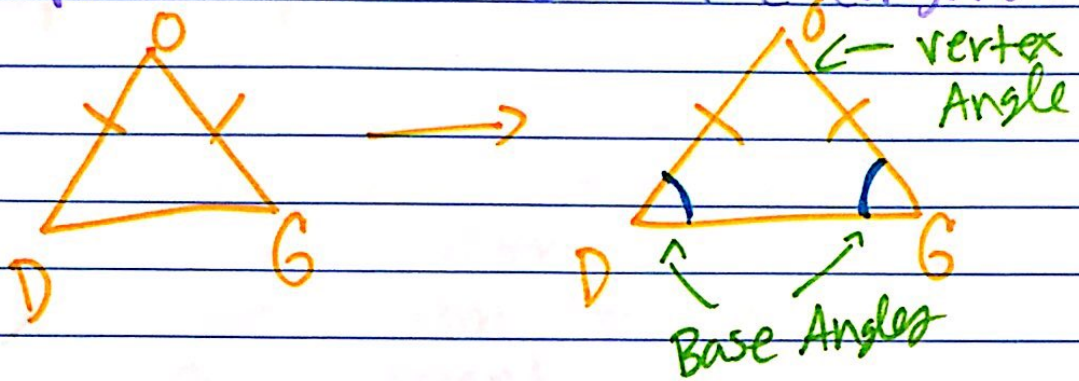


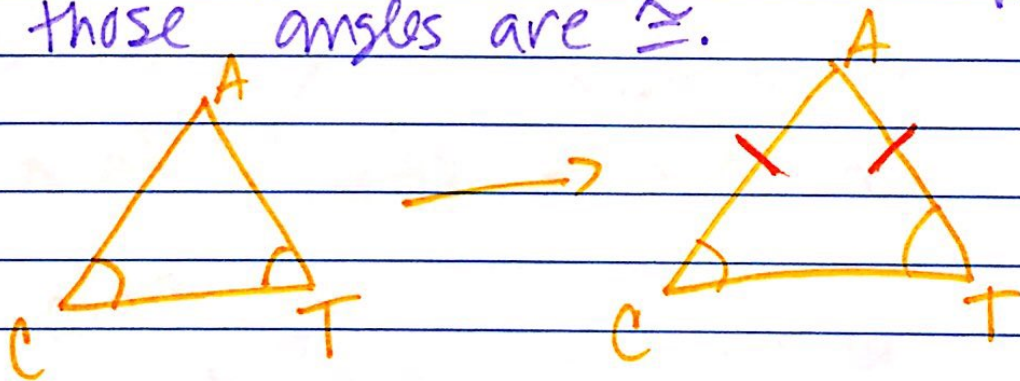
ITT and ITT Converse

ITT "isosceles Triangle Theorem":

if 2 sides of a triangle are congruent then the angles opposite those sides are congruent.



ITT Converse: if 2 angles of \triangle are congruent then the sides opposite those angles are \cong .



(ex) vertex angle of isosceles \triangle is 22° .
What are the base angles?

