

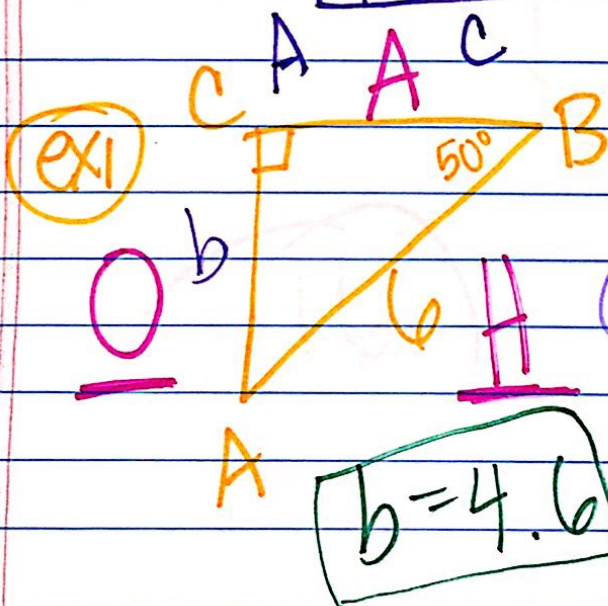
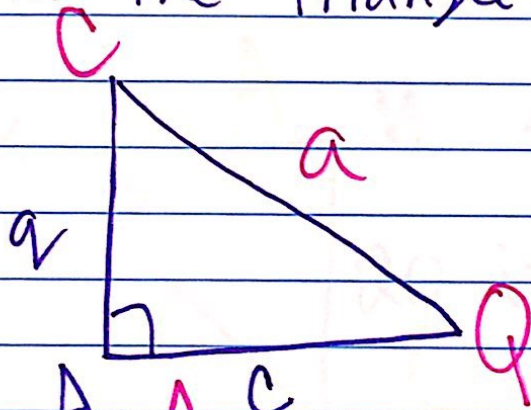
Solving Triangles using SOH CAH TOA

"Solve the triangle" - find all sides and angles

Angles are always capital letters "A"
Sides are always lowercase "a"

Angle "A" is across from side "a"

Fill in the triangle:



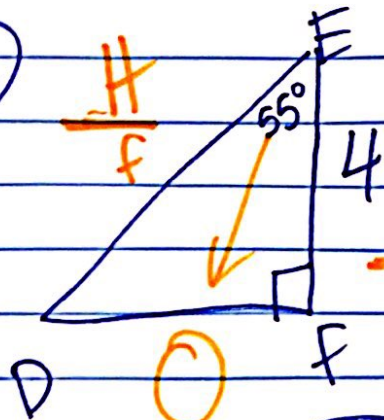
find b:

$$b \cdot \sin(50) = \frac{b}{b}$$

$$b \sin(50) = b$$

$$b = 4.6$$

ex²



CAH

find f:

$$f \cos(55) = \frac{4}{f}$$

$$f \cdot \cos(55) = 4$$

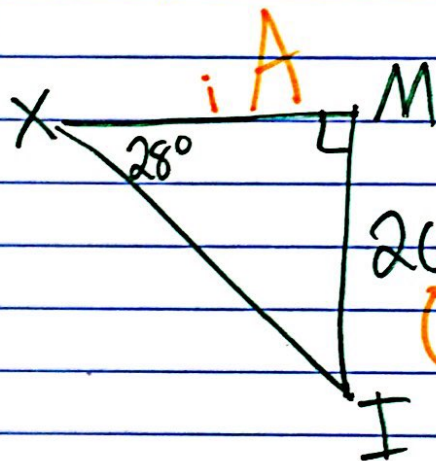
$$\frac{f \cdot \cos(55)}{\cos(55) \cos(55)} = \frac{4}{\cos(55)}$$

$$f = \frac{4}{\cos(55)}$$

$$f = 6.97$$

$$2 = \frac{6}{x}$$

ex³



find i:

$$20 \tan(28) = \frac{20}{i} \cdot i$$

$$\frac{i \tan(28)}{\tan(28) \tan(28)} = \frac{20}{\tan(28)}$$

$$i = 37.6$$

pg. 16