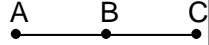


Unit 4A: Day 1 Homework

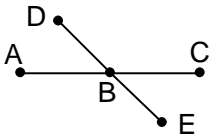
$\overline{RS} \cong \overline{MN}$

[ ]

B is the midpoint of  $\overline{AC}$

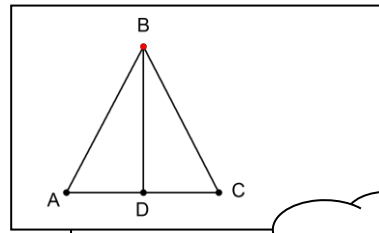


[ ]



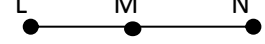
$\overline{DE}$  bisects  $\overline{AC}$

[ ]



$\overline{BD} \cong \overline{BD}$

M is the midpoint of  $\overline{LN}$



[ ]

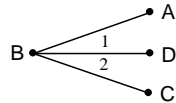
$\angle S$  is right

[ ]

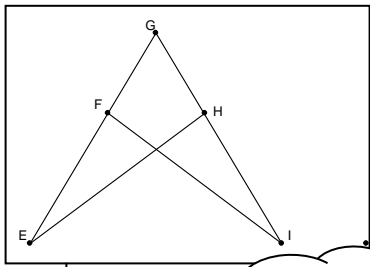
$\angle T \cong \angle R$

[ ]

$\overline{BD}$  bisects  $\angle ABC$

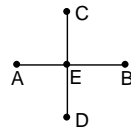


[ ]



$$\triangle G \cong \triangle G$$

$\overline{CD}$  is the perpendicular bisector of  $\overline{AB}$



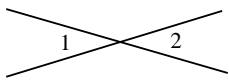
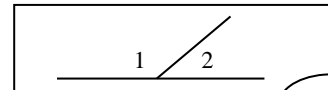
$\angle 1$  and  $\angle 2$  are supplementary



$\angle 1$  and  $\angle 2$  are complementary



$\angle 1$  and  $\angle 2$  are right angles.



$\overrightarrow{RS} \perp \overrightarrow{ST}$

